

# SECURITON Aspirating Smoke Detection



**PRODUCT CATALOGUE**  
**SEC-ASD-531/532/533/535**

MM-ASDCA4





## SECURITON

SEC-ASD-531/532/533/535

### Introduction

#### SecuriSmoke ASD aspirating smoke detectors: the complete model range for any application

Aspirating smoke detectors from Securiton are among the most precise and most reliable early warning systems against fires. The SecuriSmoke ASD detector series impresses by virtue of its unrivalled capabilities. Developed in Switzerland and manufactured in Germany, the detectors are particularly reliable and robust. Thanks to their sophisticated detection technology, they can detect incipient fires immediately. Whether in IT racks, production halls or large deepfreeze areas, Securiton has the perfect fire protection solution for all safety requirements. SecuriSmoke ASD detectors are available in four models, with the main difference between them being the maximum possible monitoring area. This means that protection without compromise is now even more cost-effective in small premises. All detectors can be seamlessly integrated into the SecuriFire fire detection system and are extremely durable thanks to their robust design.

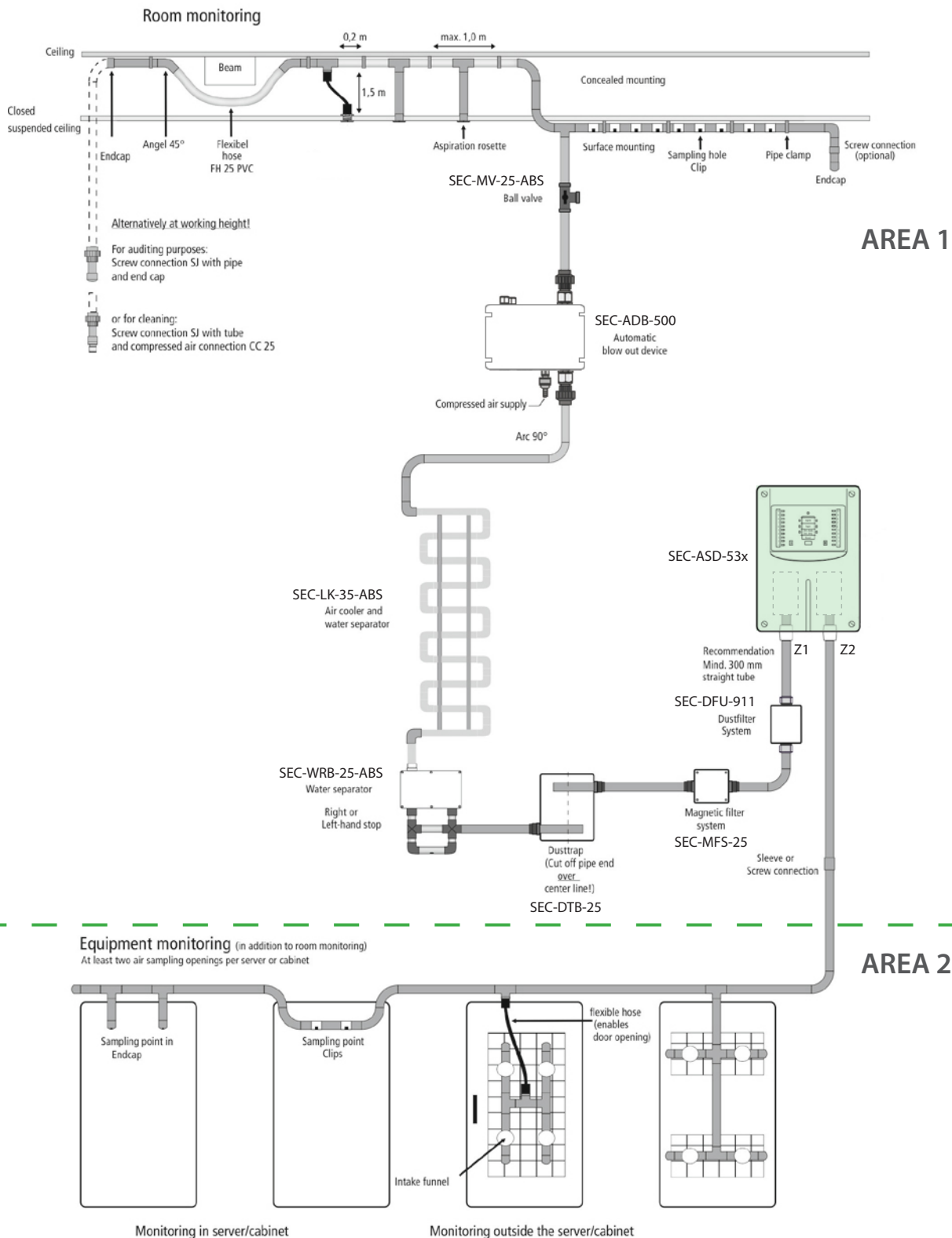
#### A combination of sensitivity and speed

In terms of smoke concentration, the alarm sensitivity of the HD (high-dynamic) smoke sensor ranges from 0.002%/m to 10%/m. This is equivalent to the sensitivity spectrum of a laser-based detector. In the extra-large LVSC (large-volume smoke chamber), the sensor permanently analyses the airflow with a high-power LED using tried-and-tested scattered light technology. It meticulously detects even the slightest increases in smoke concentration. With its patented lint filter, it suppresses even the finest dust particles that would otherwise falsify the detection process. Thanks to its optimised aerodynamic measuring chamber, the smoke sensor is also immune to dust deposits. This means that there is little chance of false alarms. Up to five alarm levels can be programmed within the sensitivity range of 0.002%/m to 10%/m. You can then rest assured that individual measures can be taken for each monitored zone. With dangers and hazards detected this precisely, any necessary alarm response is focused and extremely swift.

## System Comparison Chart

	SEC-ASD-535	SEC-ASD-533	SEC-ASD-532	SEC-ASD-531
Channels	1/2	1	1	1
Smoke sensor	High-sensitivity smoke sensor with high-power LED, LVSC smoke chamber and patented lint filter			
Monitoring area	5760 m <sup>2</sup>	1920 m <sup>2</sup>	1280 m <sup>2</sup>	720 m <sup>2</sup>
Pipe length	2 x 300m	200m	120m	75m
Max number of holes				
Class A	2 x 18	16	8	6
Class B	2 x 56	50	12	8
Class C	2x 120	50	16	12
Interfaces	Relays, USB, RS485, Inputs	Relays, USB, Inputs	Relays, Ethernet, RS485, Inputs	Relays, Inputs
Optional modules	4 slots for: RIM35, SIM35, MCM35	4 slots for: RIM35, MCM35	2 slots for: RIM36, SIM35	2 slots for: RIM36
Smoke level indicator	Optional (version -3 and -4)	No	Yes	No
Programming (PC tool)	ASD Config	ASD Config	ASD Config	Not available
Configuration	EasyConfig	EasyConfig	EasyConfig	BasiConfig
Calculation of sampling pipes	ASD PipeFlow	ASD PipeFlow	ASD PipeFlow	ASD PipeFlow

# System Overview SEC-ASD-535, 1 or 2 Zone



The illustrated components are examples and can be combined within the scope of the technical possibilities. The technical documentation, installation instructions and regional standards must be observed. The planning and calculation software ASD Pipeflow is to be consulted for project engineering since the devices have different expansion stages.

## Overview compatibility

	SEC-ASD-531		SEC-ASD-532		SEC-ASD-533 / 535	
Project planning:	Technical Document	PipeFlow (Software)	Technical Document	PipeFlow (Software)	Technical Document	PipeFlow (Software)
Configuration:	BasiConfig (on board)		EasyConfig (on board) or ASD Config (Software)	ASD Config (Software)	EasyConfig (on board) or ASD Config (Software)	ASD Config (Software)
Filter						
SEC-DFU-911	<input checked="" type="checkbox"/>		<input checked="" type="checkbox"/>		<input checked="" type="checkbox"/>	
Capillary tube						
Capillary tube 10mm	<input checked="" type="checkbox"/>		<input checked="" type="checkbox"/>	<input checked="" type="checkbox"/>	<input checked="" type="checkbox"/>	
Heating material for LT applications						
All material	<input checked="" type="checkbox"/>		<input checked="" type="checkbox"/>		<input checked="" type="checkbox"/>	
Detonation flame arrester for Ex applications						
SEC-DFA-25-1						
SEC-DFA-25-2	<input checked="" type="checkbox"/>		<input checked="" type="checkbox"/>		<input checked="" type="checkbox"/>	<input checked="" type="checkbox"/>
SEC-DFA-25-3						
Automatic blow out device						
SEC-ADB-500	<input checked="" type="checkbox"/>	<input checked="" type="checkbox"/>	<input checked="" type="checkbox"/>	<input checked="" type="checkbox"/>	<input checked="" type="checkbox"/>	<input checked="" type="checkbox"/>
Detector box						
SEC-REK-511	<input checked="" type="checkbox"/>	<input checked="" type="checkbox"/>	<input checked="" type="checkbox"/>	<input checked="" type="checkbox"/>	<input checked="" type="checkbox"/>	<input checked="" type="checkbox"/>
Auxiliary module						
SEC-RIM-35	<input checked="" type="checkbox"/>		<input checked="" type="checkbox"/>		<input checked="" type="checkbox"/>	
SEC-RIM-36	<input checked="" type="checkbox"/>		<input checked="" type="checkbox"/>		<input checked="" type="checkbox"/>	
SEC-SLM-35	<input checked="" type="checkbox"/>		<input checked="" type="checkbox"/>		<input checked="" type="checkbox"/>	
SEC-MCM-35	<input checked="" type="checkbox"/>		<input checked="" type="checkbox"/>		<input checked="" type="checkbox"/>	
SEC-SIM-35	<input checked="" type="checkbox"/>		<input checked="" type="checkbox"/>		<input checked="" type="checkbox"/>	<input checked="" type="checkbox"/>



## Aspirating Systems

### ASD Base Units

#### Aspirating Smoke Detector



#### SEC-ASD 531 including SEC-SSD-31

The SecuriSmoke SEC-ASD-531 aspirating smoke detector is designed for smaller monitoring areas and for the easiest possible handling.

The SEC-ASD-531 is equipped with a highly sensitive smoke sensor SEC-SSD-31 using a single sampling pipe network. The housing provides the option for two expansion modules.

Commissioning and configuration is done directly on the device without any software tool.

For planning the ASD PipeFlow software allows an optimized design of any installation.

Mains voltage:	14 to 30 VDC
Power consumption:	77 mA
Protection class:	IP54
Operating temperature:	-10°C to +55°C
Weight of basic version:	1950 g
Dimensions (HxWxD):	290 x 195 x 140 mm
Material:	ABS-Blend, UL 94-V0
Color:	grey (RAL 280 70 05) anthracite (RAL 300 20 05)

#### Approvals

VdS-Approval:	G 215100
UL-Approval:	S 25264
FM-Approval:	3045947
Declaration of Performance (DoP):	CPR-10-16-106
ActivFire Approval:	afp-3130



**SEC-ASD 532**

The SecuriSmoke SEC-ASD-532 aspirating smoke detector is designed for small to midsize monitoring areas. The SEC-ASD-532 base unit is provided for a highly sensitive smoke sensor SEC-SSD-532 (to be ordered separately) for a single sampling pipe network. The measured smoke level is indicated on a bar graph display. The housing provides the option for two expansion modules. Commissioning and configuration is done either directly on the device or via the ASD Config software tool. For planning the ASD PipeFlow software allows an optimized design of any installation.

Mains voltage:	14 to 30 VDC
Power consumption:	100 mA
Protection class:	IP54
Operating temperature:	-20°C to +60°C
Weight of basic version:	2000 g
Dimensions (HxWxD):	290 x 195 x 140 mm
Material:	ABS-Blend, UL 94-V0
Color:	grey (RAL 280 70 05) anthracite (RAL 300 20 05)

**Approvals**

VdS-Approval:	G 215101
UL-Approval:	S 25264
FM-Approval:	3045947
Declaration of Performance (DoP):	CPR-10-16-107
ActivFire Approval:	afp-3131



Aspirating Smoke Detector



**SEC-ASD 533** including SEC-SSD-533

The SEC-ASD-533 aspirating smoke detector has the task of continuously taking air samples via a sampling pipe tube network from a monitored area and feeding the samples to a smoke sensor.

The SEC-ASD-533 consists of the detector housing and a sampling pipe tube network. The sampling pipe has several sampling holes whose size is such that each hole extracts the same amount of air. The sampling pipe may be I-, U-, T-, H-, or E-shaped. The sampling pipe is symmetrically designed in principle. Asymmetrical sampling pipe tube networks can also be implemented using the "ASD PipeFlow" calculation software.

Mains voltage:	10.5 to 30 VDC
Power consumption:	210 mA
Protection class:	IP54
Operating temperature:	-20°C to +60°C
Weight of basic version:	3255 g
Dimensions (HxWxD):	265 x 397 x 148 mm
Material:	ABS-Blend, UL 94-V0
Color:	grey (RAL 280 70 05) anthracite (RAL 300 20 05)

**Approvals**

VdS-Approval:	G 212163
UL-Approval:	S 25264
FM-Approval:	to be defined
Declaration of Performance (DoP):	CPR-11-13-100
ActivFire Approval:	afp-3671

Aspirating Smoke Detector



SEC-ASD 535-1



SEC-ASD 535-2



SEC-ASD 535-3



SEC-ASD 535-4

- SEC-ASD 535-1**      1 Sampling pipe / Detector
- SEC-ASD 535-2**      2 Sampling pipes / Detectors
- SEC-ASD 535-3**      1 Sampling pipe / Detector,  
1 Smoke level display
- SEC-ASD 535-4**      2 Sampling pipes / Detectors,  
2 Smoke level displays

The SecuriSmoke SEC-ASD-535 aspirating smoke detector is designed for universal applications mainly for midsize to large monitoring areas. The SEC-ASD-535 base units provide space for 1 or 2 highly sensitive smoke sensors SEC-SSD-535 (to be ordered separately) for 1 or 2 sampling pipe networks.

The measured smoke level can be indicated on a bar graph display (models -3 and -4). The housing provides the option for four expansion modules. Commissioning and configuration is done either directly on the device or via the ASD Config software tool. For planning the ASD PipeFlow software allows an optimized design of any installation.

Mains voltage:	10.5 to 30 VDC
Power consumption:	260 mA
Protection class:	IP54
Operating temperature:	-30°C to +60°C
Weight of basic version:	3550 g
Dimensions (HxWxD):	397 x 265 x 146 mm
Material:	ABS-Blend, UL 94-V0
Color:	grey (RAL 280 70 05) anthracite (RAL 300 20 05)

**Approvals**

VdS-Approval:	G 208154
UL-Approval:	S 25264
FM-Approval:	3045947
Declaration of Performance (DoP):	CPR-10-16-101
ActivFire Approval:	afp-2796

## Smoke Sensors (SSD)

### Smoke Sensor for SEC-ASD-31



#### SEC-SSD-31

Alarm Sensitivity range  
0,02% – 10% /m

The smoke sensor SEC-SSD-31 is pre-installed in the SEC-ASD-531 and is also available as replacement part. 3 Pre-signals are set on a fixed percentage of the alarm threshold (30/50/70%).

- Sensitivity range alarm: 0.02 %/m – 10 %/m
- Sensitivity range pre-signals: 0.006 %/m – 7 %/m

Operating voltage: 5 VDC

Dimensions (HxWxD): 120 x 116 x 95 mm

### Smoke Sensor for SEC-ASD-532



#### SEC-SSD-532-3

Alarm Sensitivity range  
0,02% – 10% /m

The smoke sensor SEC-SSD-532 has to be ordered separately for the SEC-ASD-532.

3 Pre-signals can be set between 10 and 90% of the alarm threshold.

- Sensitivity range alarm: 0.02 %/m – 10 %/m
- Sensitivity range pre-signals: 0.002 %/m – 9 %/m

Operating voltage: 5 VDC

Dimensions (HxWxD): 120 x 116 x 95 mm

### Smoke Sensor for SEC-ASD-533



#### SEC-SSD-533

Alarm Sensitivity range  
0,02% – 10% /m

The smoke sensor SEC-SSD-533 is pre-installed in the SEC-ASD-533 and is also available as replacement part. Pre-signals can be set between 10 and 90% of the alarm threshold

- Sensitivity range alarm: 0.02 %/m – 10 %/m
- Sensitivity range pre-signals: 0.006 %/m – 9 %/m

Operating voltage: 5 VDC

Dimensions (HxWxD): 127 x 120 x 95 mm

**Smoke Sensor for SEC-ASD-535**



**SEC-SSD-535-3**

Alarm Sensitivity range  
0,02% – 10% /m

The smoke sensor SEC-SSD-535 has to be ordered separately for the SEC-ASD-535 family. Pre-signals can be set between 10 and 90% of the alarm threshold.

- Sensitivity range alarm: 0.02 %/m – 10 %/m
- Sensitivity range pre-signals: 0.002 %/m – 9 %/m

Operating voltage: 5 VDC

Dimensions (HxWxD): 127 x 120 x 95 mm

**Accessories**

Fastener plate to cover a smoke sensor chamber	SEC-ASD-535-Verschl
--	---------------------

**Smoke Sensing Device high Sens**



**SEC-SSD-535-3-CP**

The smoke sensor SEC-SSD-535 has to be ordered separately for the SEC-ASD-535 family. Pre-signals can be set between 10 and 90% of the alarm threshold.

- Sensitivity range alarm: 0.02 %/m – 10 %/m
- Sensitivity range pre-signals: 0.002 %/m – 9 %/m
- All the electronic parts are coated.

Operating voltage: 5 VDC

Dimensions (HxWxD): 127 x 120 x 95 mm

## Expansion modules

### Relay I/F module for SEC-ASD-535



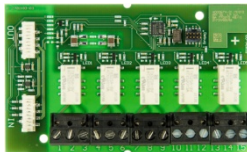
#### SEC-RIM-35

5 relays with changeover contacts

The SEC-RIM-35 module is coated and brings five (5) additional relay outputs to your SEC-ASD-535. Expansion limit is two (2) SEC-RIM-35 / 10 relays. Each relay can be assigned to any ASD event by programming with the ASD Config software. The module comes with mounting brackets, screws and ribbon cable.

Operating voltage:	5 VDC
Power consumption:	15 mA
Operating temperature:	-30°C to +60°C
Weight:	85 g
Dimensions (HxWxD):	58 x 97 x 17 mm

### Relay I/F module for Special Fire Detectors



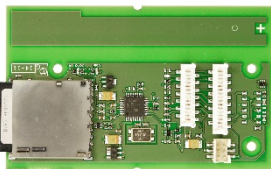
#### SEC-RIM-36

5 relays with changeover contacts

The SEC-RIM-36 module is coated and brings five (5) additional relay outputs to your Special Fire Detector (except SEC-ASD-535). Expansion limit is two (2) SEC-RIM-35 / 10 relays. Each relay can be assigned to any ASD event by programming with the ASD Config software. The module comes with mounting brackets, screws and ribbon cable.

Operating voltage:	5 VDC
Power consumption:	15 mA
Operating temperature:	-30°C to +60°C
Weight:	85 g
Dimensions (HxWxD):	58 x 97 x 17 mm

### Memory card module for SEC-ASD-535



#### SEC-MCM-35

The Memory Card Module lets you trace up to 18'000 events and logs the measurement data of 80 days. This capability is fixed (SD cards larger than 1GB will not expand it). The board comes with mounting brackets, screws and ribbon cables, with SD card.

Operating voltage:	5 VDC
Power consumption:	25 mA
Operating temperature:	-30°C to +60°C
Weight:	43 g
Dimensions (HxWxD):	58 x 99 x 17 mm

## Serial I/F Module networking of Special Fire Detectors



### SEC-SIM-35

The SEC-SIM-35 module is coated and is for the RS 485 networking of up to 250 Special Fire Detectors like SEC-ASD-535 or SEC-ASD-532 . Using the “ASD Config” configuration software, all ASDs in the network can be visualized and configured from a PC. The module comes with mounting brackets, screws and ribbon cables.

Operating voltage:	5 VDC
Power consumption:	20 mA
Operating temperature:	-30°C to +60°C
Weight:	56 g
Dimensions (HxWxD):	58 x 95 x 17 mm

## Serial Master Module for networking of Special Fire Detectors



### SEC-SMM-535

This interface connects the RS485 (over SEC-SIM-35) networked ASDs to a USB port of a PC. It is powered by the USB port.

Operating voltage:	USB powered / 5 VDC
Operating temperature:	-30°C to +60°C
Weight:	165 g
Dimensions (HxWxD):	82 x 89 x 55 mm
Material:	PC
Color:	light grey (RAL 7035)

## Incite Fire Dongle



### SEC-D&PL-ASD-CONF-N

Dongle and Partner License ASD Config

## USB 2.0 Cable



### SEC-KAB-USB-45






USB 2.0 cable for connection between SEC-ASD-535 and PC for commissioning and maintenance via ASD Config

Length:	4.5m
Type:	A-B

## Spare Parts

### ASD Spare Parts



#### Main boards

	Main board for SEC-ASD-535-1 and -3 Repair exchange only	SEC-AMB-35-1
	Main board for SEC-ASD-535-2 and -4 Repair exchange only	SEC-AMB-35-2
	Main board for SEC-ASD-533-1 Repair exchange only	SEC-AMB-33-1
	Main board for SEC-ASD-531 Repair exchange only	SEC-AMB-31
	Main board for SEC-ASD-532 Repair exchange only	SEC-AMB-32



#### Basic control board

	Basic control board for standard display of SEC-ASD-535-1 and -2 Repair exchange only	SEC-BCB-35
	Basic control board for advanced display of SEC-ASD-535-3 and -4 Repair exchange only	SEC-ACB-35







#### Air flow

	Air flow sensor for SEC-ASD-535 Repair exchange only	SEC-AFS-35
	Air flow sensor for SEC-ASD-531 and SEC-ASD-532 Repair exchange only	SEC-AFS-32

#### Aspirating fan

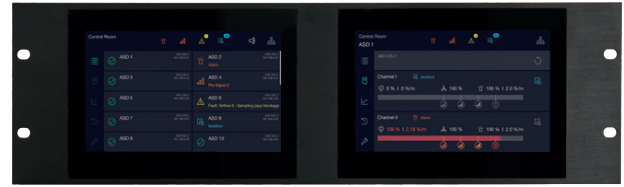
	Aspirating fan unit for SEC-ASD-535	SEC-AFU-35
	Aspirating fan unit for SEC-ASD-531 and SEC-ASD-532	SEC-AFU-32

#### Various spare parts

	SD-Card Industrial 2GB	SEC-SD-Industrial
	Button battery	WLESS-SB
	Rotary Snap Lock for SEC-ASD-531/532/535 delivery unit: 4 pcs	SEC-RSL-35
	Insect protection screen for SEC-ASD-531/532/535 delivery unit: 2 pcs	SEC-IPS-35
	M20 Cable Screw Union delivery unit: 10 pcs	SEC-M20-VE10
	M25 Cable Screw Union delivery unit: 10 pcs	SEC-M25-VE10

# ASD Networking and Visualization

FidesNet makes it possible to connect multiple SecuriSmoke aspirating smoke detectors in a network while also enabling decentralised access via one or more FidesControl SEC-RCU-700 units. The performance scope includes RS-485 networking plus the visualisation and operation of all connected ASDs on the FidesControl RCUs linked in the network. Various other functions can be implemented in addition to visualisation and operation. The FidesNet networking solution offers the possibility of connecting the special fire detectors on the field level to superordinate systems via the FidesPort SEC-NCU-900.



## FidesNet

### Fire Detection System Network

#### Networking of Securiton special fire detectors

##### Function

Using FidesNet, multiple ASDs are connected to each other via a serial RS-485 interface. The SEC-SIM-35 module is used as the serial interface module in the SecuriSmoke ASD. The FidesPort SEC-NCU-900 regulates communication in the network and integrates it into the superordinate system. In order to forward data from the field level, the FidesPort SEC-NCU-900 supports standard interfaces (such as Modbus TCP) for connecting to hierarchically superordinate systems such as a BMS building management system or Securiton's own visualisation system, Netsoft.

##### Networking

The ASDs on the RS-485 field bus can be connected with the FidesControl SEC-NCU-700 displays as required. All ASD-to-RCU combinations are possible here. Per RS-485 network, up to 100 ASDs and 50 RCUs can be connected to an SEC-NCU-900.

##### Applications

The FidesNet network solution is typically used wherever remote visualisation and operation are required. This may be due to difficult-to-access areas – such as high-security areas at airports, in laboratories, IT environments, etc – where aspirating smoke detectors are installed but where a technician cannot always gain access (or where access is difficult). Another possible application is central visualisation and operation in a safety management system in order to monitor the entire installation from a single location. In addition to remote visualisation and operation, the connection to other systems via standardised interfaces is another important area of application. For example, forwarding the relevant measurement data to a measurement system at a data centre allows an operating company to gain an overview of the current system status.

##### Operation

Operation takes place via the 7-inch touchscreen on the FidesControl unit. All data from the networked special fire detectors is available on this display. Each detector in the network can be accessed via the FidesControl unit in order to call up detailed information, such as for pending maintenance work. The detectors can be isolated by channel and also reset in the event of errors or alarms.

- The networked ASDs can be divided up between various FidesControl units as required (e.g. 1 ASD : 1 RCU; 1 ASD : 50 RCUs; 100 ASDs : 1 RCU; 100 ASDs : 50 RCUs, etc.). Up to 100 ASDs are possible on one RCU.
- The elegant 7-inch touchscreen display sets new standards when it comes to user experience.
- Various interfaces are available on the FidesPort, such as Modbus TCP. These can be used to integrate the data from the networked ASDs directly into other systems, such as building management systems.
- The FidesControl displays can be operated via Power over Ethernet (PoE).
- Individual customer-specific configuration of the display measuring value units in relative (%) or absolute (%/m), default screen, acoustics, etc.
- Configuration of display language (German, English, simplified Chinese, etc.)
- Protection against unauthorised operation (isolation protected via PIN entry)
- Interface to the Netsoft visualisation system.



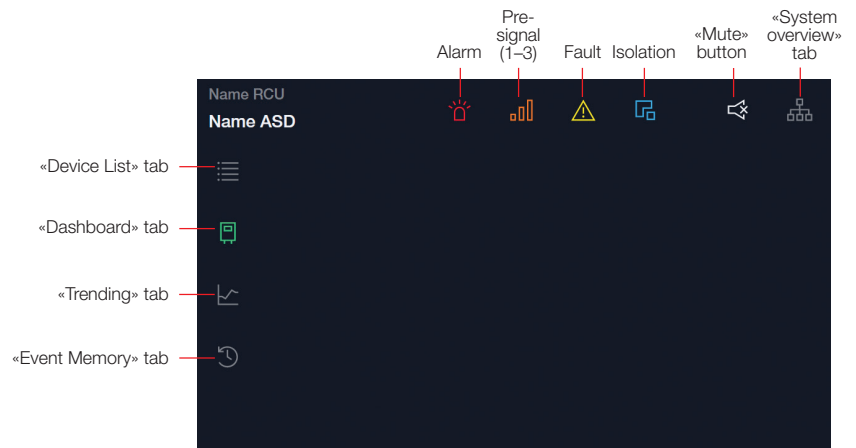
### Overview of the visualisation interface

The graphic interface is divided up into the areas navigation, header and page content.

Navigation: for switching views.

Header: for the superordinate presentation of faults, pre-signals, alarms, isolations and name texts.

Page content: area of application for the various tabs.



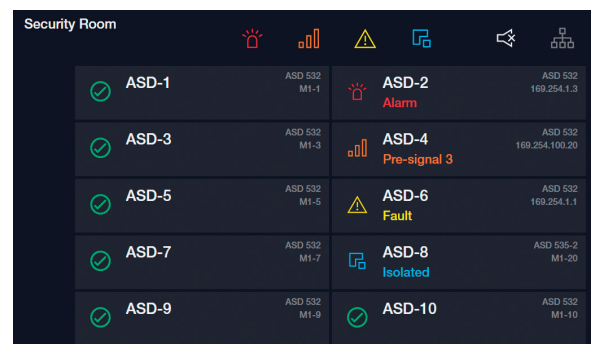
## FidesControl SEC-NCU-700

### Graphic interface of the FidesControl SEC-NCU-700 with ASD-relevant views – important information at the right time

The simply designed graphic interface allows for intuitive interaction between the user and all connected network participants. This leads to optimal user guidance and the best possible user experience.

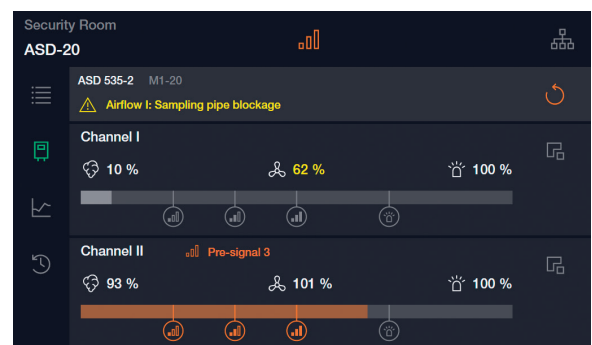
#### Device List

In the «Device List» view, all or a selection of the devices connected in a system with a FidesPort can be displayed depending on the customer's wishes. In this view, the status of the individual networked devices is highlighted in colour and is thus immediately apparent. If a device is selected, the user switches to the dashboard of the corresponding device.



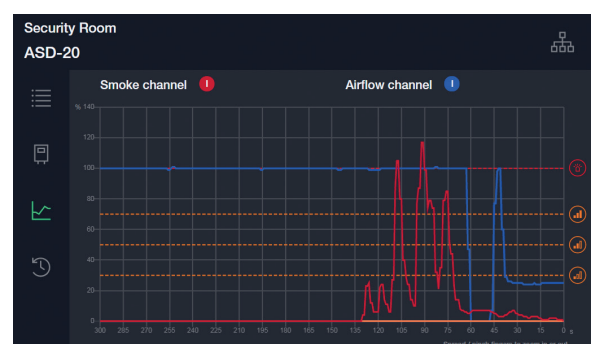
#### Dashboard

The individual channels of the corresponding aspirating smoke detector are shown on the dashboard. In addition to the current measurement values (smoke and airflow in relative (%) or absolute (%/m), a level indicator also shows the current smoke value in relation to the pre-signal thresholds and alarm threshold. This leads to a quick and uncomplicated interpretation of the situation. In this view, the individual channels of an ASD can be isolated or the entire device can be reset.



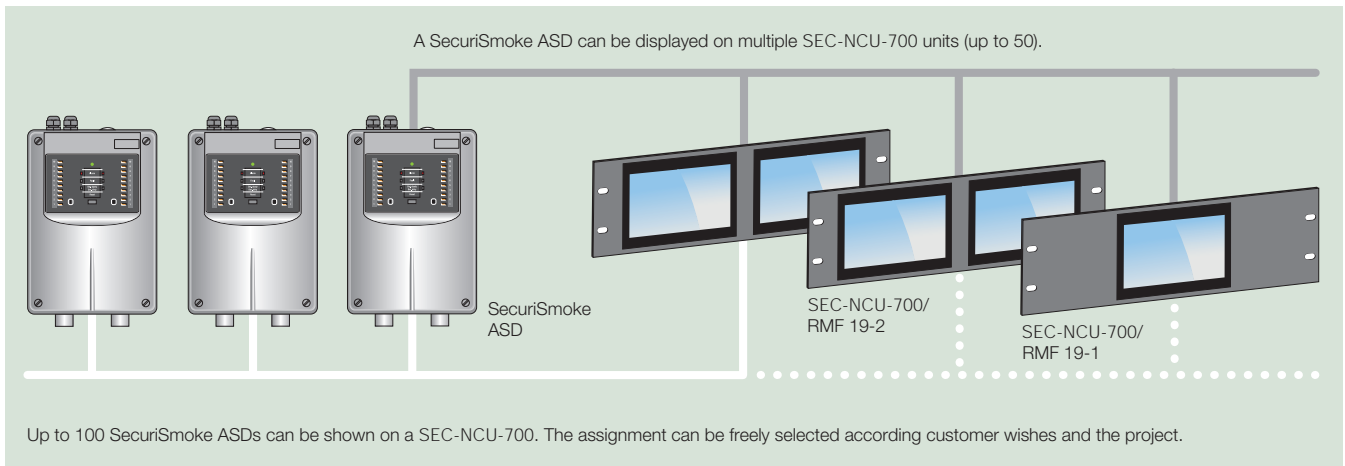
#### Trending

This view shows the measurement values of the airflow and smoke value as a line diagram. The trend lines show both real-time values and past values. As an additional aid, the curves are also shown in relation to the configured pre-signal and alarm thresholds.



#### Other views

- Event memory, shows most recent events
- System view, information from the whole system



## FidesPort SEC-NCU-900

**FidesPort SEC-NCU-900 – the link between non-native networking and comfort networking** The FidesPort connects the field level with its networked ASDs with the Ethernet side. In this scenario, the SEC-NCU-900 assumes the role of data gateway to the Ethernet network.

### Mechanical design

The FidesPort consists of a 19-inch front panel with a height unit, onto which the NMB 90 main board is fastened on the rear. The 19-inch design allows for installation in a conventional

19-inch rack, in which one or more FidesControl units plus the power supply and switch can also be positioned.

### Data availability

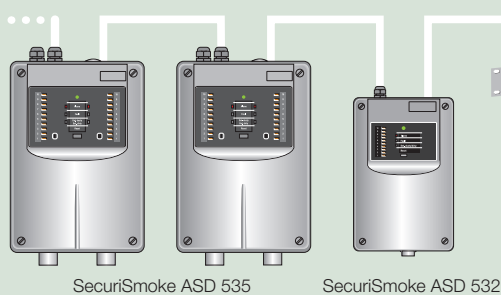
The measurement data of the networked aspirating smoke detectors on the RS-485 field level are read out by the FidesPort and prepared for forwarding to comfort networking. Hierarchically superordinate systems (such as a management system) can obtain the data via Modbus from the FidesPort SEC-NCU-900.

**FidesControl units** can be connected to the Ethernet network to ensure local visualisation of the individually networked ASDs.

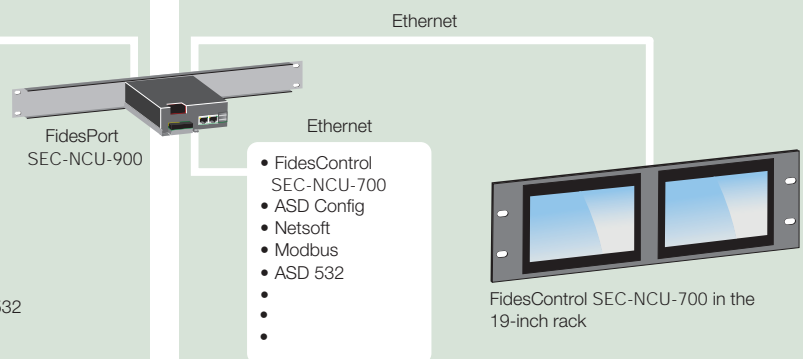
The **ASD Config** tool for specialists can obtain the data directly from the FidesPort. Difficult-to-access ASDs can then be maintained easily.

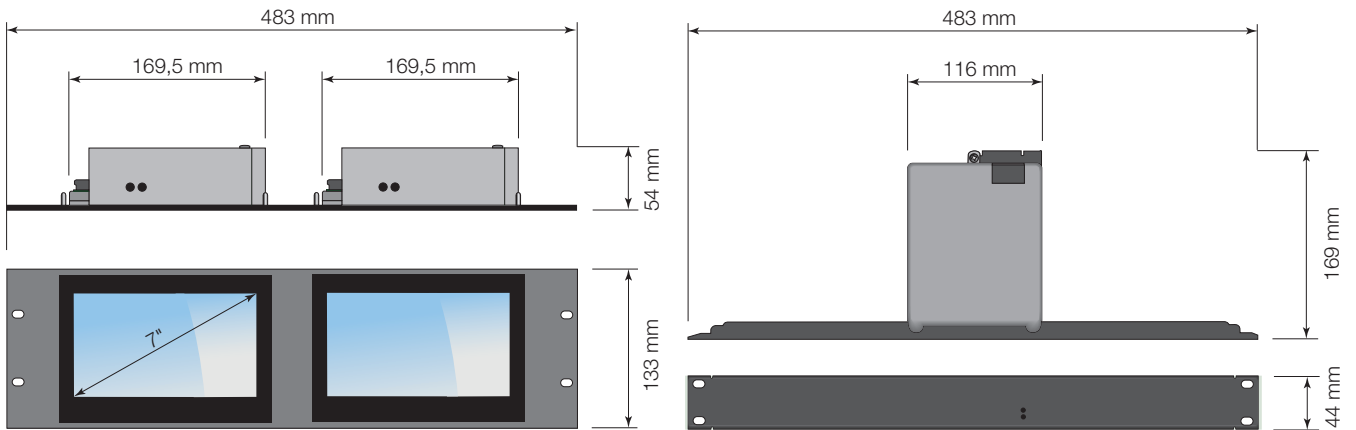
## FidesNet

### RS-485 connection



### Ethernet connection





Technical data	FidesControl SEC-NCU-700	FidesPort SEC-NCU-900
Supply voltage	14–30 VDC	14–30 VDC
Interfaces	RJ45 (Ethernet) USB	2 × RJ45 (Ethernet) 2 × USB 1 × RS-485
Housing	19-inch frame	19-inch frame
Colour	Black anodised	Black coated
Packaging	Cardboard	Cardboard
Dimensions (W×H×D)	483 × 133 × 54 mm	483 × 44 × 169 mm
Operating temperature/humidity	0–50 °C; 95%	0–50 °C; 95%
Technical documentation	T 140 741	T 140 741
<b>Order numbers</b>		
SEC-NCU-700	Remote control unit	
SEC-NCU-900	Network communication unit	
SEC-RMF-19-1	SEC-NCU-700 mounting frame 19-1	
SEC-RMF-19-2	SEC-NCU-700 mounting frame 19-2	
<b>Supported devices</b>		
SEC-ASD-535	Aspirating smoke detector for 1 or 2 SEC-SSD-35 smoke sensors	
SEC-ASD-532	Aspirating smoke detector for 1 SEC-SSD-532 smoke sensor	
SEC-SIM-35	Serial interface module	

Specifications subject to change without notice. Delivery subject to availability.

## FidesNet

### Hardware

	Remote Control Unit	SEC-RCU-700
	Network Communication Unit	SEC-NCU-900
	RCU 700 Mounting frame 19-1	SEC-RMF-19-1
	RCU 700 Mounting frame 19-2	SEC-RMF-19-2

## Detector Box



### SEC-REK-511

For the channel identification, cabinet monitoring or localisation of a fire in a separate room. To use together with the SEC-SSD-515-Xs smoke detector.

Operating voltage:	18 to 28 VDC
Power consumption:	30 mA
Protection class:	IP53
Operating temperature:	-0°C to +50°C
Weight of basic version:	580 g
Dimensions (HxWxD):	186 x 122 x 85 mm
Material:	ABS
Color:	light grey (RAL 7035)

## Scattered light smoke detector for SEC-REK-511



### SEC-SSD-515-3S sensitivity 0.3%/m

The SEC-SSD-515-xS is the smoke sensor for the accessory device SEC-REK-511 for the Aspirating Smoke Detector family. The SEC-SSD-515-Xs operates according to the scattered light principle and is designed so that it optimally meets the specific requirements of smoke detection in association with an Aspirating Smoke Detector.. By choosing the appropriate detector sensitivity, application-specific detection properties of the Aspirating Smoke Detector are possible.

Mains voltage / Frequency:	18 to 28 VDC
Power consumption:	29 mA
Operating temperature:	-20°C to +60°C
Weight of basic version:	74 g
Dimensions (ØxH):	80 x 56 mm
Material:	PC

## Compressed-air connection

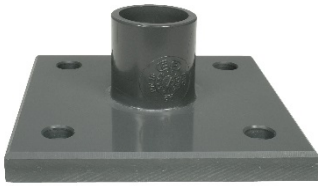


### SEC-CC-25-ABS

Compressed-air connection for tube SEC-TU-25-ABS for cleaning the aspirating tube.

Material:	ABS
Color:	grey

## Ventilation duct flange



### SEC-DF-25-ABS

Flange for tube SEC-TU-25-ABS for the monitoring of ventilation ducts. Per duct 1 or 2 pcs for aspirating stub and 1 or 2 pcs for the air recirculation, depending the width of the duct.

Material:	ABS
Color:	grey

## Sampling Points

### Sampling hole clip



<b>SEC-CLIP-2.0-PA</b>	Hole diameter: 2.0 mm
<b>SEC-CLIP-2.5-PA</b>	Hole diameter: 2.5 mm
<b>SEC-CLIP-3.0-PA</b>	Hole diameter: 3.0 mm
<b>SEC-CLIP-3.5-PA</b>	Hole diameter: 3.5 mm
<b>SEC-CLIP-4.0-PA</b>	Hole diameter: 4.0 mm
<b>SEC-CLIP-4.5-PA</b>	Hole diameter: 4.5 mm
<b>SEC-CLIP-5.0-PA</b>	Hole diameter: 5.0 mm
<b>SEC-CLIP-5.5-PA</b>	Hole diameter: 5.5 mm
<b>SEC-CLIP-6.0-PA</b>	Hole diameter: 6.0 mm
<b>SEC-CLIP-6.5-PA</b>	Hole diameter: 6.5 mm
<b>SEC-CLIP-7.0-PA</b>	Hole diameter: 7.0 mm

Sampling hole on aspirating pipe (clip).  
Available with different diameter according to the project data.  
Only for pipes with 25 mm diameter.  
delivery unit: 10 pieces

### Maintenance clip



### SEC-CLIP-REV-PA

Clip without hole for revision purpose.  
delivery unit: 10 pieces

Dimensions (Ø):	25 mm
Material:	PA

**Sampling-funnel**



**SEC-SF-ABS**

Sampling-funnel for tubes SEC-TU-25XXX. For sampling points exposed to high air current like monitoring of server racks or air conditioners.

- For pipes with a max. Ø of 25mm
- Hole diameter: 5.0 mm

Operating temperature:	-40°C to +100°C
Material:	ABS

**Sampling-funnel**



**SEC-SF-22-PE-EX**

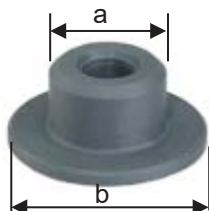
ATEX

Sampling-funnel for application in ATEX areas. Use with stainless steel tubes SEC-TU-22 StSteel. For sampling points exposed to high air current.

- For pipes with Ø of 22mm
- Hole diameter: 5.0 mm

Operating temperature:	-40°C to +80°C
Material:	Murfeld S (antistatic)

**Rosette for sampling tube stiff**



**SEC-SP-36-ABS**

For tubes SEC-TU-25-ABS to create the sampling point type "sampling tube stiff with rosette". Has to be glued into the tubes SEC-TU-25-ABS.

- Various outer Ø (b) on demand available.
- Delivery unit: 10 pieces

Dimensions (Ø):	a: 21.5 mm
	b: 35 mm
Material:	ABS

### Sampling point for ceiling duct (Set)



#### SEC-SP-M20-PVC-Set

Sampling point for ceiling ducts. Complete set incl. T-Piece TP 25XXX, flex sampling pipe (FT 21 PA) and sampling point (SP M20 XXX).

- Length sampling stub: 1.5 m

Material: PVC

### Sampling point with heating



- SEC-HEAT-3.0-ABS**    red
- SEC-HEAT-3.5-ABS**    blue
- SEC-HEAT-4.0-ABS**    green
- SEC-HEAT-4.5-ABS**    black
- SEC-HEAT-5.0-ABS**    brown

To install the aspirating pipe in deep-freeze rooms to prevent the freezing of the aspirating holes. HEAT X.X is the relevant diameter for ASD PipeFlow-calculations (3.0/3.5/4.0/4.5/5.0mm)

Dimensions (Ø): 25 mm

Hole Diameter	
5,7 mm	SEC-HEAT-3.0-ABS
6,1 mm	SEC-HEAT-3.5-ABS
6,3 mm	SEC-HEAT-4.0-ABS
6,7 mm	SEC-HEAT-4.5-ABS
7,1 mm	SEC-HEAT-5.0-ABS

### Heat Resistor



#### SEC-HEAT-RESISTOR

Replacement for the sampling point with heating HEAT X.X ABS.

- Resistor: 220 Ω

**Cable connection fitting**

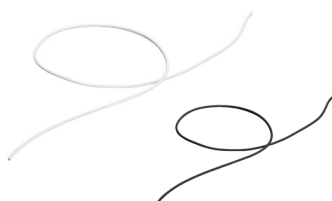


**SEC-CCF-25-ABS**

Cable connection fitting set for T-junctions of the tubes in deep-freeze rooms.

Dimensions (Ø): 25 mm

**Silicon litz wire**



**SEC-SLW-0.5-wt**      white

**SEC-SLW-0.5-bk**      black

Silicon litz wire 0.5mm<sup>2</sup> to connect the heating resistors in the heating nozzles HEAT X.X ABS.  
delivery unit: 100 m

**Wiring connection unit**



**SEC-WCU-535**

For the introduction of the supply of sampling points with heating into the aspirating tube, with internal clamps.  
For more details, please see the guidelines for deep freeze-warehouses.

- Pipe connection Ø 25 mm

Weight: 317 g

Dimensions (HxWxD): 150 × 107 × 85 mm

Material: PC

Color: light grey (RAL 7035)



## Accessories

### Dust filter unit



#### SEC-DFU-911

#### SEC-DFU-911S with protection flap

The SEC-DFU-911 dust filter unit can be installed in the sampling pipe tube network for use with an ASD aspirating smoke detector in applications subject to dust or dirt. This significantly extends the service life of the smoke sensors, air flow sensors and fans used in the ASD and results in enhanced resistance to false alarms.

The SEC-DFU-911S version has an integrated protection flap to avoid a filter is used without cartridge and to protect the ASD during cartridge exchange.

Operating temperature:	0°C to +60°C
Weight of basic version:	490 g
Dimensions (HxWxD):	210 x 111 x 137 mm
Material:	ABS blend, UL 94-V0

#### Accessories

Replacement cartridge for DFU 911 and DFU911S	SEC-RFC-911
Replacement cartridge for DFU 911 and DFU911S delivery unit: 20 pcs	SEC-RFC-911VE20

#### Assembly hint:

Not suitable for deep freeze, outdoor and areas with high humidity.

### Filter box small



#### SEC-FBS-25-PC

Filter box small including filter-mat. Inserted into the sampling pipe before ASD.

- Pipe connection Ø:25 mm

Operating temperature:	-30°C to +60°C
Dimensions (HxWxD):	80 x 82 x 85 mm
Material:	PC
Color:	light grey (RAL 7035)

#### Accessories

Filter mat small for filter box small delivery unit: 5 pcs	FBS 25 EFM
--	------------

#### Assembly hint:

Special filter for deep freeze application.

**Magnetic filter system**



**SEC-MFS-25**

To supplement the dust filter unit with the range of metal-containing dusts.

- Extends the service life of the smoke sensors used in the aspirating smoke detector
- Prevents false alarms caused by dust containing metal
- Includes two 5/4-inch reductions to 40 mm and two reductions 40 mm by 25 mm (PVC)

Operating temperature:	-30°C to +60°C
Dimensions (HxWxD):	315 x 125 x 100 mm
Material:	PC
Color:	light grey (RAL 7016)

**Dirt trap box**



**SEC-DTB-25**

Dirt trap box

To be used in very dusty rooms. Inserted into the sampling pipe before dust filter of any type and ASD.

- Pipe connection Ø:25 mm

Operating temperature:	0°C to +60°C
Dimensions (HxWxD):	160 x 250 x 90 mm
Material:	PC
Color:	light grey (RAL 7035)

## Water retaining devices



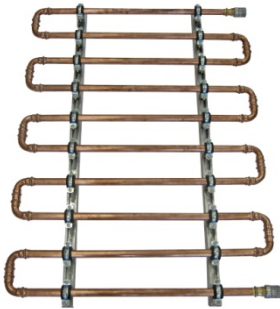
### SEC-WRB-25-ABS

Water retaining box with automatic drain  
Used in rooms with high humidity. Inserted into the sampling pipe before SEC-DTB-25 (when used), any types of dust filters (when used) and ASD.

- Pipe connection Ø:25 mm

Operating temperature:	0°C to +60°C
Dimensions (HxWxD):	160 x 250 x 90 mm
Material:	ABS
Color:	light grey (RAL 7035)

## Air cooler and water separator



### SEC-LK-35-ABS

Is used as an air cooler when the sampling pipe is in a room >60°C. Can also be used as a water separator in rooms with high amount of air humidity and / or condensing water because of temperature differences. For more details see the technical documentation.

Operating temperature:	0°C to +60 °C
Weight of basic version:	8000 g
Dimensions (HxWxD):	1000 x 730 x 80mm
Material:	Copper pipe d=22x1 mm

## Automatic blow out device



### SEC-ADB-500

1 sampling pipe ABS

The automatic blow-out devices are used in areas which are polluted with a high amount of dust- and dirt particles. With the blow-out device, 1 sampling pipe is automatically blown out and cleaned, to prevent fault messages caused by clogged aspiration points and also to avoid false alarms. At the same time, the life-time of the „optical scattered-light-detector“ located in the aspiration system is substantially increased.

- 4 bar constant air pressure
- Pipe connection Ø:25 mm

Mains voltage / Frequency:	15 to 30 VDC
Power consumption:	55 mA
Protection class:	
SEC-ADB-500	IP65
Operating temperature:	0°C to +50°C
Weight of basic version:	
SEC-ADB-500	2800 g
Dimensions (HxWxD):	
SEC-ADB-500	235 x 205 x 90 mm

## Manual ball valve



### SEC-MV-25-ABS

Manual ball valve for revision and cleaning works with compressed air.

- Pipe connection Ø:25 mm

Operating temperature:	-40°C to +60°C
Dimensions (HxWxD):	100 × 145 × 90 mm
Material:	ABS
Color:	silver grey (RAL 7001)

## Detonation flame arrester



### SEC-DFA-25-3

category IIC

### SEC-DFA-25-2

category IIB

### SEC-DFA-25-1

category IIA

Detonation flame arrester for explosion zones. 2 pieces are needed per sampling tube.

For more details see the technical documentation.

- Pipe connection Ø:25 mm

### Approvals

Ex Approval:	BAM 01 ATEX 0007 X
--------------	--------------------

## Noise reduction housing



### SEC-ASD-HOUSING

The noise insulation housing is used as an accessory part for the aspirating smoke detector SEC-ASD-535 in areas where a low level of noise is required. If the ventilator noise from the aspirating smoke detector is found to be disruptive and changing the location of the evaluation unit is not possible, the aspirating smoke detector can be integrated into a noise insulation housing.

- Sound pressure level: 20 dB (A)

Protection class:	IP54
Weight of basic version:	21,5 Kg
Dimensions (HxWxD):	500 x 500 x 300 mm
Material:	Steel sheet
Color:	light grey (RAL 7035)

## Additional housing for SecuriSmoke SEC-ASD-535



### SEC-ASD-HOUSING-EX

The additional housing is designed for the integration of an aspirating smoke detector SEC-ASD-535. The additional housing should be used as additional personal protection in explosive areas. If there is danger of operations related damage (e.g. lift truck operations) to the aspirating smoke detector, the additional housing can serve as a mechanical protection measure.

Protection class:	IP54
Weight of basic version:	21 Kg
Dimensions (HxWxD):	500 x 500 x 300 mm
Material:	Steel sheet

#### Assembly hint:

The ASD Ex Housing must be placed outside of the Ex-Zone.





## **Sydney**

Block Y, Unit 1, 391 Park Road, REGENTS PARK NSW 2143  
Mail: PO Box 508 GYMEA NSW 2227  
Phone: 1300 INCITE (1300 462 483) | 02 9644 7144  
Fax: 02 9644 7255  
Email: [sales@incitefire.com.au](mailto:sales@incitefire.com.au)  
Technical support: [support@incitefire.com.au](mailto:support@incitefire.com.au)

## **Melbourne**

Address: Unit 120, 45 Gilby Road, MT WAVERLEY VIC 3149  
Phone: 03 9544 2211  
Fax: 03 9544 2212  
Email: [salesvic@incitefire.com.au](mailto:salesvic@incitefire.com.au)

## **Brisbane**

Address: 25 Jeays Street, BOWEN HILLS QLD 4006  
Phone: 07 3252 5366  
Fax: 07 3252 4099  
Email: [salesqld@incitefire.com.au](mailto:salesqld@incitefire.com.au)

## **Perth**

Address: Unit 2, 48 Irvine Drive, MALAGA WA 6090  
Phone: 08 9349 2972  
Email: [saleswa@incitefire.com.au](mailto:saleswa@incitefire.com.au)